



# Forest View

Primary School





“

*At Forest View, we believe that when education, care, and therapeutic support come together, children can achieve remarkable progress. Our team is dedicated to creating an environment where every child feels safe, nurtured, and inspired to grow.*

”

Liz McDonagh, Education Services



# Welcome to Forest View Primary School

## Nurturing Success

Nestled in the rural outskirts of Lochwinnoch in the West of Scotland, Forest View Primary is an inclusive, therapeutic school which specialises in supporting children with additional support needs (ASN), and those who have experienced trauma. As part of the child and youth care charity, Kibble, we create inspiring, therapeutic learning experiences tailored to each child's needs.

Forest View Primary School provides a safe, nurturing and supportive environment for up to 54 children. Children attend as either day or residential pupils. In a beautiful woodland setting, our campus is designed with, therapeutic trauma-informed, principles at its core, offering:

- Small class sizes (up to six pupils per class) with dedicated Classroom Support Workers.
- Therapeutic spaces, including nurture and sensory rooms, wooden cabins, soft play, and breakout spaces.
- Access to outdoor learning across our abundant forest grounds.
- Integration of animals to support human-animal interaction and foster emotional growth.
- A key teacher for each child, and a key worker assigned to support them.
- A range of therapeutic supports from our in-house Specialist Intervention Services (SIS).

Therapeutic, trauma-informed practice is at the heart of Forest View and is embedded in everything from the furniture to the classroom resources, training and culture.



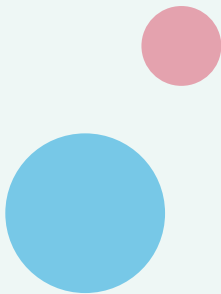




# An Inclusive, Bespoke Curriculum

Forest View Primary follows Scotland's Curriculum for Excellence, enriched by our therapeutic methods and idyllic rural environment. We create personal learning plans, tailored to each child's individual needs and interests, with achievement and developmental progress as our priorities.

Following international research, Forest View promotes human-animal interaction. We have our very own pony, goats, geese, turkeys, ducks, hens, rabbits, guinea pigs, dogs and a resident cat.





The great outdoors gives freedom to explore and learn about the ecosystem, fine-tune motor skills and learn about risk. Pupils don their welly boots and waterproofs to build bridges and dens, with literacy and maths lessons often being taught in the forest with the support of our animal friends. Many of the opportunities at Forest View are child-led, with an emphasis on developmental progress and risky-play based on the theories of German educator Friedrich Froebel.

To further enhance our curriculum, we place a real emphasis on outdoor learning and this is strengthened with the support of an Outdoor Education Coordinator.

### **A Journey Towards NAS Accreditation**

We are committed to becoming accredited by the National Autistic Society (NAS). This journey highlights our dedication to ensuring that Forest View Primary provides an environment where children with autism and other ASN are supported to thrive.

# Specialist Intervention Services

Children at Forest View Primary are supported by Kibble's Specialist Intervention Services (SIS). The SIS team has over 20 years' experience of providing trauma-informed psychological consultation, assessment and therapeutic support for children with complex needs. Psychologists, Family Therapists and Child and Adolescent Therapists are all at Forest View providing ongoing support to the children and their families. We support children to make sense of their experiences and develop a range of emotional regulation and behavioural skills. This helps them cope better in the classroom and at home, thus enabling fuller participation in school life.

There is real integration between the SIS team, education and care teams, ensuring that therapeutic strategies are embedded into daily classroom routines and care plans. This integrated approach allows for consistent support, helping children feel safe and nurtured across all settings. The therapeutic supports we provide to families helps them strengthen their capacity to fully support their child's engagement in education. We offer a range of therapies to ensure that every child and their family get the support that is right for them. These include:

- Integrative Child Therapy
- Art Therapy
- Drama & Movement Therapy
- Play Therapy
- Systemic Family Therapy

In addition, each child will have access to:

- Multi-disciplinary team formulation chaired by in-house psychology on admission
- Individual weekly therapeutic sessions
- Monthly therapeutic meetings to inform the children's individual education and support plan











# Nurturing Houses

Forest View offers two residential care houses on campus and others in the community. Set amidst the serene forest surroundings, these homes provide stability and nurturing care for children unable to live with their families. Each house mirrors the school's therapeutic ethos, creating a space where children feel love, stability and belonging.

Our dedicated care teams celebrate each child's unique character and achievements from the big to the small, and help them integrate into the local community.





# Day Education Placements

Forest View Primary School offers Day Education Placements for children who require additional support beyond what mainstream education provides. These placements are designed for pupils who have complex needs and have faced challenges leading to disengagement from learning. Our goal is to re-engage children by providing a supportive and tailored educational experience.

Our services extend beyond school hours. The team is always a phone call away, and outreach may be available in the evenings or at weekends, based around activities or extended time with the pupil's key worker.

By choosing a Day Education Placement at Forest View, pupils become part of the wider Kibble community, benefiting from a nurturing environment that addresses both educational and emotional needs. Our aim is to reverse patterns of disengagement and encourage pupils to enjoy learning and achieve positive outcomes.

# Supportive Transitions

We understand that transitions can be particularly challenging for children, especially those who have experienced trauma or have additional support needs. At Forest View we provide tailored support, at the child's pace through gradual introductions, visits and collaboration with the team around the child.

For our Primary 7 pupils, who are transitioning to our secondary school, Goudie Academy, the staff teams work together to ensure each child experiences a positive progression. Joint learning opportunities between Forest View and Goudie Academy allow pupils to become familiar with the environment and staff, helping them build confidence before moving on. Collaborative projects, shared activities, and ongoing communication between the schools fosters consistency and continuity, promoting a smooth and successful transition.



“

*Forest View is no ordinary primary school, it's a place where learning comes to life. A place where happy childhood memories are made, where boys and girls splash in muddy puddles, go on adventures, and explore the abundant wildlife.*

”

Jackie Swan - Director of Education





# Community Connections and Sustainability

**“It takes a village to raise a child.”** At Forest View, we actively engage with Lochwinnoch’s welcoming community, encouraging our children to participate in local events, clubs and heritage projects.

Our sustainability practices reflect our commitment to future generations, including:

- Sourcing food from local suppliers.
- Promoting recycling and environmental stewardship.
- Offering volunteering opportunities for local residents.

# Meet the Animals

Set in the forest grounds, alongside our primary school you'll find our friendly, inquisitive animals. As well as offering the children so much joy, each of the animals plays a central role in the children's development. With the support of a professional animal handler, the animals provide incredible support to the children ranging from developing trust, empathy and communication, to being inherent in curricular activities.

Let us introduce you to our special four-legged and feathered friends:

**Meet Jessica the Miniature Shetland Pony. She loves to be pampered by our children at Forest View.**





**Michael Finnigan is one of our three resident goats who love to play and get up to mischief. They are also budding actors and have starred in a TV show!**



**Forest View has some very distinguished residents from the Kings own flock. Our gaggle of geese are a rare breed of Shetland geese. One of our beautiful geese even appeared in a movie!**



**George is our trusty steed who loves taking our children out for pony rides.**



“

I am... Respected

”



**At Forest View, our core values are embedded across all aspects of our school from the curriculum to the environment and supports we have in place. This ensures children and staff are respected; encouraged to be ambitious, and know that they belong. Below are just some of the ways we support young people at Forest View Primary.**

### **Right Support at the Right Time**

We follow the Getting it Right for Every Child (GIRFEC) approach, which promotes the wellbeing of children and young people. This ensures young people are at the heart of all decision-making, that children and families are integral in improving wellbeing, and that the team work collaboratively in the best interests of the child.

### **Positive Relationships**

Relationships are the foundation of all that we do at Forest View Primary. We embed relational approaches throughout the school as we know that strong, trusting relationships are the foundation for meaningful learning, growth and positive outcomes. As well as dedicated teachers, children are supported by classroom assistants, therapeutic practitioners and wider instructors to encourage and support children to engage with learning. Support is also provided by a key worker, or a 'go to person' who follows the child's journey whilst they are at Kibble.

We also engage with families and all those important to the children, ensuring they are actively involved in their child's school journey.

### **Connected Care and Support**

At Forest View, we take a holistic approach to education, care and support for children. In this way, there is a wide team around the child to ensure all aspects of a young person's education and journey are aligned, and that this is also shaped around their individual needs and learning styles. This provides important structure and stability for children, with a network of support to improve performance, attainment, wellbeing and support.

### **Therapeutic Support for Young People and Families**

Children are supported by our in-house Specialist Intervention Services (SIS) team. The large, multi-disciplinary team consists of clinical and forensic psychologists, family therapists, speech and language therapists and counsellors. Young people have access to a range of therapeutic supports and interventions depending on their needs at any time.

Each young person is offered a dedicated SIS worker to follow their journey while at Forest View.



**respect**



**ambition**



**belonging**

“

I am... Ambitious

”





## Inspiring Education

To support the needs of our children, at Forest View Primary, we keep class sizes small (with up to six children) to provide more dedicated teaching. Additionally, we ensure there is a cohesive team around the child to promote wellbeing and engagement in learning.

We follow the Curriculum for Excellence whilst also offering each of our pupils a bespoke personalised learning plan with an emphasis on outdoor education.

The acres of outdoor space at Forest View Primary provide a large outdoor learning environment with sustainable play areas, outdoor classrooms and an animal enclosure to promote human/animal interaction.

The school also has a sensory room that children can go to at any time they may feel overwhelmed, or need some time away from the classroom.

## Advocacy, Promoting Rights and Voices

Children are actively encouraged to share their voices, helping to shape the quality of their education and wellbeing. This is achieved through a number of forums from regular 'Our Voice' meetings with children and staff, feedback forms and speaking directly to the adults around them. At Forest View, we have established a number of steering groups alongside children and young people including The Promise Implementation Group, an ECO Schools Group and a UN Rights Respecting Centre Group. We promote a culture of diversity and inclusion where everyone is valued, supported and respected.

In addition, young people who are care experienced, are supported by Who Cares? Scotland, a national voluntary organisation for care experienced young people and care leavers.

## Widening Opportunities

We encourage children to enjoy a wide variety of activities, events and community groups. Whether its local football clubs, drama groups, Brownies or art clubs, we ensure young people have access to a range of activities to have fun and make new friends.



**respect**



**ambition**



**belonging**

“  
I... Belong  
”



## Supportive Environment

From the moment you step through the doors of Forest View Primary, you will immediately feel welcome. Throughout the school the walls are decorated with stories of children's achievements, artwork and exciting class project work. Each classroom has been carefully designed to include furniture and accessories to help children regulate when they may need. Additionally, we have therapeutic wooden cabins that children can visit when meeting therapeutic practitioners. Sensory rooms, outdoor classrooms, a large timber play area and animal enclosure provides a safe, supportive and nurturing environment.

## Continuity of Care and Support

All children who stay at one of our children's houses and attend school here have an active care plan that ensures all aspects of their education, care and support are aligned. This ensures the best interests of young people are being met, whilst promoting a shared understanding among all those around them. This is achieved in line with our Therapeutic, Trauma-Informed Model, which includes regular care planning meetings with representation across education, care, therapeutic support, social work and families. This provides clear direction for young people both now and in the future.

## Support with Moving On

Where young people are moving on from Forest View Primary, we go to great lengths to ensure a supportive and gradual transition. Children may attend Goudie Academy, our secondary school at our Paisley campus, or alternatively move to a mainstream school. Where a child moves to Goudie Academy, we have established a middle school to help bridge the gap between primary and secondary stage. This includes keeping a continuation of core teaching staff, and dedicated classrooms to help children transition at a steady pace. Where a child moves to a mainstream setting, the team around the child will work with the school to ease the transition, including regular visits.



**respect**



**ambition**



**belonging**





# Kibble: A Charity with Strong Roots

Kibble is a specialist child and youth care charity and a leading social enterprise. For over 160 years we've been supporting children and young people (aged 5 – 26), many of whom have experienced significant trauma. Through our integrated services and dedicated support, we help them to move forward with their lives. We also provide a safe, stable environment to ensure the best outcomes for children and young people.

Our practice is becoming increasingly trauma-informed and includes; education, residential care, education day services, psychological and therapeutic support, intensive fostering, secure care, young workforce development, community housing and housing support.

**To find out more or enquire about places at Forest View, please contact Kibble on 0141 889 0044, or email [referrals@kibble.org](mailto:referrals@kibble.org). We welcome visitors to come and see Forest View and explore the diverse learning experiences for pupils.**









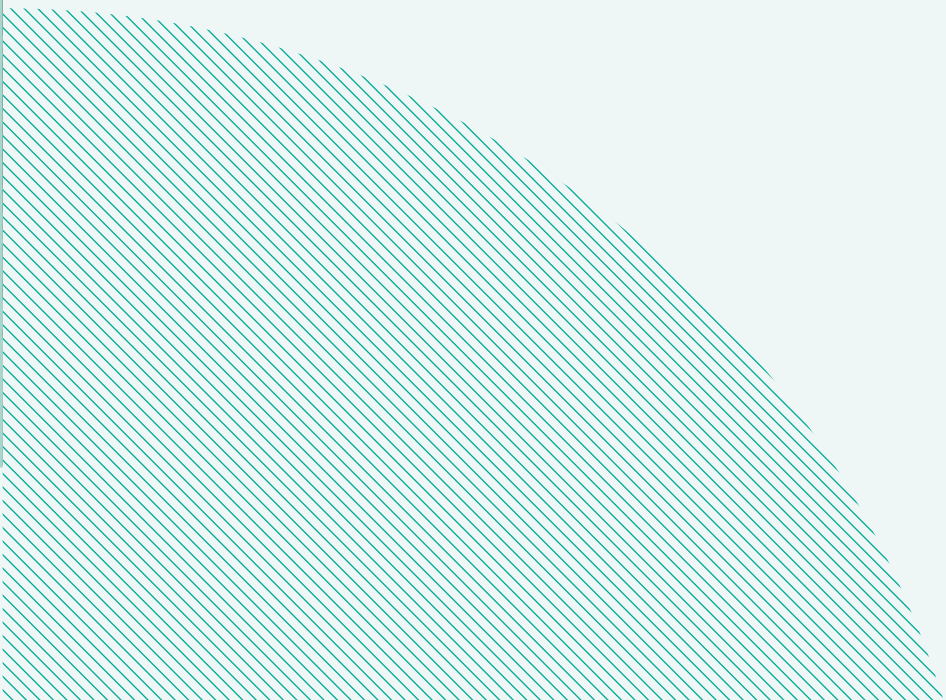


“

*I love building  
dens in the forest  
with my friends.  
The teachers are  
kind and always  
cheers me up  
when I'm sad.*

”

Forest View Primary Pupil





Kibble Group

133 Finnieston Street, Glasgow G3 8HB

T: 0141 889 0044 [www.kibble.org](http://www.kibble.org)

X @KibbleGroup  KibbleGroup

Registered Office 133 Finnieston Street, Glasgow G3 8HB  
Scottish Charity No. SC026917 Company Limited by Guarantee  
Registered in Scotland No. 158220 1805\_02/25



respect



ambition



belonging