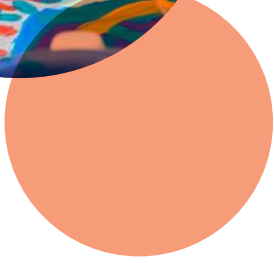


Lunderston House | Residential Children's House



Contents |

Welcome to Inverkip	4
About Kibble	6
Kibble's Therapeutic, Trauma-Informed Practice	8
Specialist Intervention Services	10
This is Our House	12



Welcome to Inverkip |

Leading child and youth care charity, Kibble has opened a residential children's house for up to four young people in the coastal village of Inverkip. The large house has individual bedrooms, open-plan living areas and great outdoor space for children to feel comfortable, happy, and relaxed. It is thoughtfully named Lunderston House after Lunderston Bay, a closeby sandy beach with a scenic, meandering pathway leading to Kip Marina in Inverkip.



The carefully selected location and impeccably designed development was created in line with therapeutic, trauma-informed principles. By adopting a family style group living model with a four-bedroom house in an idyllic setting, young people receive focussed love, care and support from a friendly, familiar and skilled staff team in a nurturing environment. There are greater opportunities to build meaningful connections and genuine relationships, which form the solid foundation of Kibble's own therapeutic, trauma-informed model.

Inverkip has a strong sense of community with a thriving Community Hub, the village regularly holds events, activities and classes that span across sport, health, recreational and social interests. It is an ideal place for young people to grow up in, explore, join in fun local festivities and overall build connections to establish a sense of belonging.



About Kibble |

Kibble is one of the most established UK charities with over 160 years' experience in supporting children and young people aged 5-26 who have experienced significant trauma and adversity. Through our integrated services and dedicated support, we help to give young people a chance at life. The safe, stable environment provided ensures children and young people can move forward with their lives, fulfil potential and achieve their ambitions.

Our services include education, residential care, psychological and therapeutic support, intensive fostering, secure care, community housing, housing support and more. All service provisions are becoming increasingly trauma-informed.

Children and young people are at the heart of everything we do – services are brought to the young person, rather than them moving from place to place. At Kibble, there's no such thing as 'one size fits all', each young person is unique, and we work tirelessly to ensure they get the best in life.





Kibble's Therapeutic, Trauma-Informed Practice |

Within Lunderston House, and across all our residential children's houses, the aim is to create somewhere young people can feel at home and enjoy spending time. In the safe space, young people can begin to cope with the significant challenges they face. Our therapeutic model helps us achieve this in an authentic way.

The key components include:

The child and our relationship with them is at the centre

Our primary goal is to build genuine connections that are ultimately healing.

Theory and Evidence Based

All that we do is rooted in theory including attachment, trauma and social pedagogy.

The Right Environment

The physical and psychological environment is designed around children's needs.

Skilled and Supported Staff

Our workforce are highly skilled and supported through reflective practice and supervision.

Integrated Services

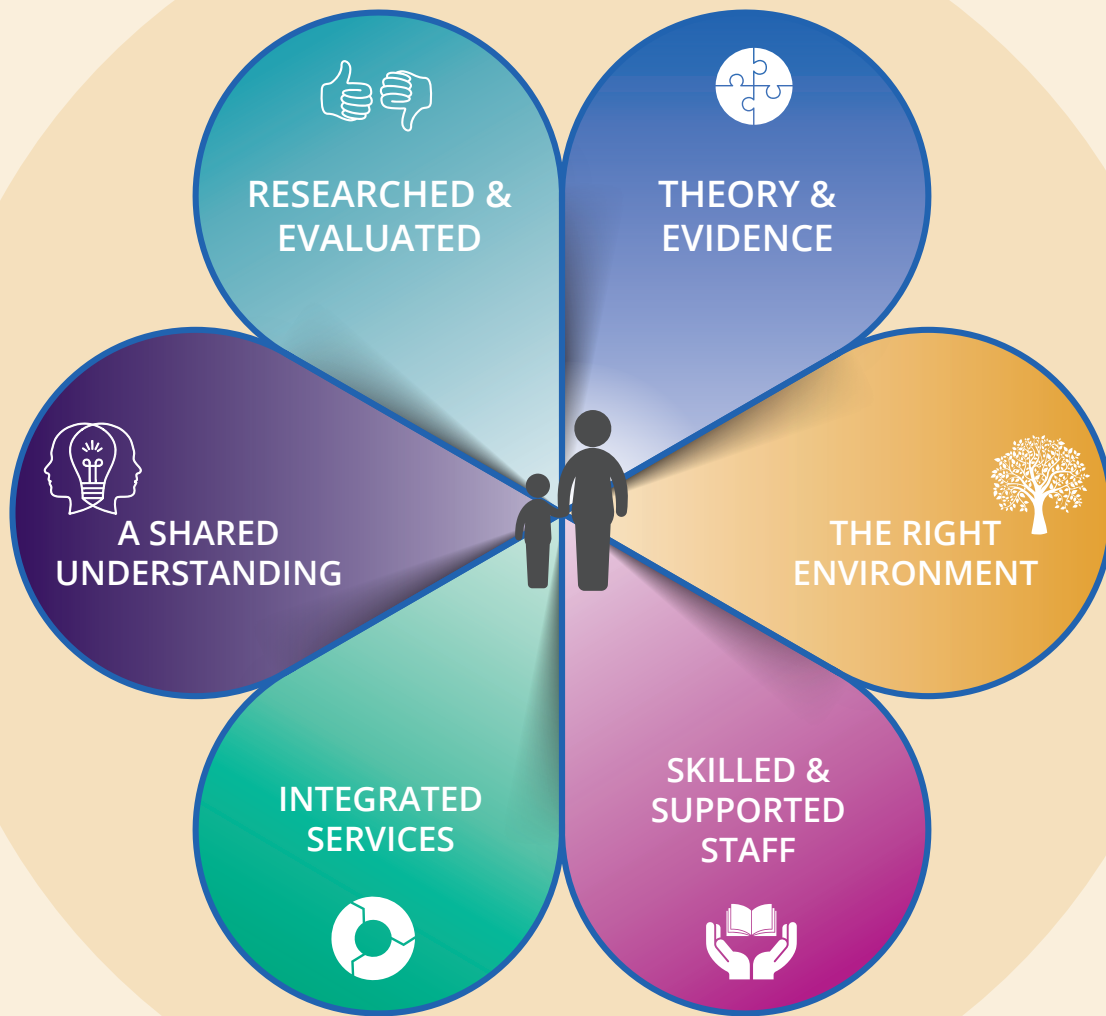
Care, education and specialist intervention services are integrated and work closely together.

A Shared Understanding

By having a shared understanding of the child, our practice is responsive and consistent.

Researched and Evaluated

The work we do reviewed in detail identifying what works, what doesn't and how we can improve.






Specialist Intervention Services (SIS) |

All children who live at Lunderston House are closely supported by Kibble's Specialist Intervention Services (SIS). The experienced, in-house team of over 20 psychologists provide trauma-informed psychological consultation, assessment and therapeutic interventions. SIS take a comprehensive, multi-disciplinary approach, ensuring all young people and their families get the right support, at the right time.

With a diversity of knowledge and expertise, the SIS team conducts ongoing research and explores best practice to ensure the highest level of care for children, young people and families. Their work has gained them several awards, including the prestigious Butler Trust Award, and they have also published widely in peer-reviewed journals. As part of their commitment to delivering therapeutic, trauma-informed care, they recently completed an international study fellowship on trauma-informed care, with the learning from this informing our practice.





Our therapeutic practitioners are integral to the team at Lunderston House: they help implement our therapeutic model and provide support children and families with a full range of therapeutic approaches from art and play therapies to cognitive behavioural therapy (CBT) and systemic family therapy.

Systemic Family Therapy

Across Kibble, we strive to help children and young people maintain connections with their families and their loved ones. Families are encouraged to visit regularly and play an active and supportive role in their child's development. We provide ongoing support to families in the form of Systemic Family Therapy, where everyone around the child or young person works together under the support of a family therapist. These sessions explore emotions and behaviours in order to develop a shared understanding and to strengthen family bonds.



This is Our House |

Lunderston House joins our existing residential children's houses, including Forest View in Lochwinnoch, Arran Villa in Largs and those on our Paisley campus, amongst others. It is our hope for all children and young people to call their house, their own.

The new children's house is specifically designed for the children and young people to whom it belongs. Their thoughts, feelings and opinions are listened to as they decorate their own bedroom, personalise all décor with photos and favourite colours and invite family members to visit when the circumstances are suitable to do so.

Lunderston House is somewhere young people feel safe, experience joy and create happy childhood memories.

“
**This is not
a children's
home, this
is our home.**

”
Young person





Step Inside

Walk into the house at Lunderston House and through windows, which span the length of the hallway, immediately take in views of sweeping greenery. Through to the living room a grand bay window fills the interior with warm, natural light. There are big couches, comforting throws, toys, games and books. Step through to dedicated kitchen and dining area that has plenty of space for us to gather, sit down together and enjoy our favourite foods while chatting and laughing. Outside, a quaint courtyard is where we can spend time in the fresh air, ideal for having BBQs and tucking into ice lollies during the summer months.



“
**It is a privilege to be
part of their lives and we
promise to always support
them, showing them love,
kindness and friendship.**

”

Natalie Connell, Acting Head of Operations





Go Outside

Surrounded by green gardens and woodlands, the great outdoors is within reach for children and young people to have fantastic adventures. By providing a safe environment, children have the confidence to get outside, be curious and explore. They can learn about the world around them, play, use their imagination, make friends and have fun. All these experiences help develop problem-solving abilities, social skills and self-esteem.

Within the Community

Children are encouraged to enjoy all that the community has to offer from going along to local celebrations to joining weekly club groups and making lots of new friends with other children.

The entire staff team encourage young people to discover new experiences and fully support them in finding activities they thoroughly enjoy taking part in. One young person joined a nearby drama class and recently played an important role in the annual performance. Her family as well as all her friends from across Kibble, both staff and young people all went along and she spotted everyone in the audience, cheering her on.



Kibble Education and Care Centre

Goudie Street Paisley PA3 2LG

T: 0141 889 0044 www.kibble.org

 @KibbleCharity  KibbleGroup

Kibble Education and Care Centre Scottish Charity No. SCO26917 Registered in Scotland No. 158220
1409_02/23