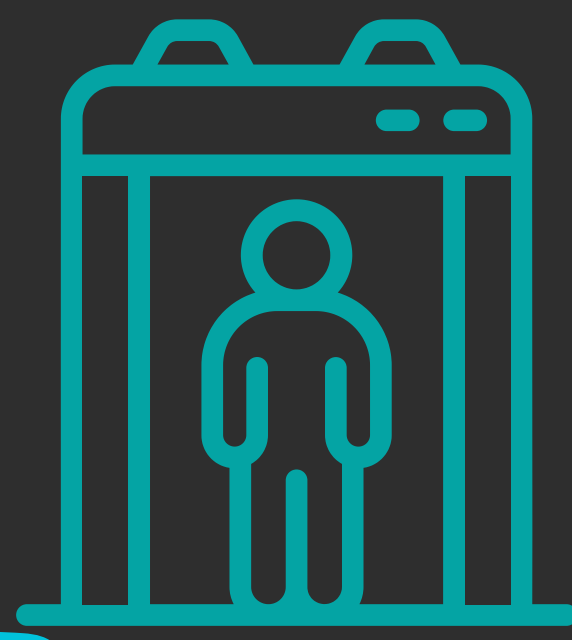


# Safe Centre Security Body Scanner



WHAT YOU NEED TO KNOW

ANSWERS TO **YOUR** QUESTIONS



Why does the Safe Centre have a body scanner?

The Safe Centre scanner is in place to protect your safety and helps make searches as simple, quick (few secs) and as contactless possible. It can highlight any objects on someone that may cause harm or are dangerous. This is part of Kibble's commitment to #KeepThePromise, the Secure Care Pathways and Standards and UNCRC.

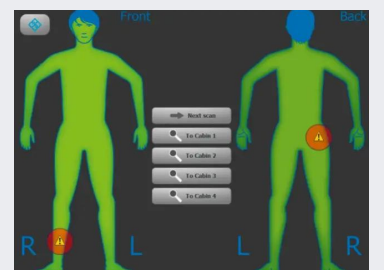
Is it safe? Will it have any long term effects on my health?

The scanner is safe and has no effects to your health. It uses 'millimetre waves' - these are radio waves that have a power output much lower than a mobile phone.

Can the scanner see through my body?

The scanner bounces waves off your body, rather than through it.

The scanner then processes these waves and can show the location of any objects on the image outline of a body.



What happens if I don't want to be scanned?

Everyone is invited to be scanned before entering the Safe Centre. There are times when this can't happen e.g. wheelchair user. If you are unsure about being scanned, please let the staff member know and the possibility of an alternative search method can be discussed. This might include a search using hand held detectors called 'wands' and a pat-down.

This leaflet was co-produced by young people with care experience.



CONVENTION ON THE RIGHTS OF THE CHILD